

GILPIN GRASSLANDS SAGA: 2019

- ◆ A focus on the Southern Interior Land Trust purchase, and
- ◆ Off-roader damage

Meanwhile, Range cattle damage continues, unabated, uncontrolled. The fencing on Nature Trust Land, proposed by, installed by and paid for by volunteers, Boundary Alliance included, continues to demonstrate what the land can look like in the absence of cows and off-roaders.

It is our hope that the SILT land purchase of 270 acres, will be a catalyst for change in the Gilpin. That subsequent actions, repairs to and closure of off-roader trails, recontouring and restoration of the gravel pit, and working together with Nature Trust and other interested parties, will see an end to range cattle grazing in the Gilpin and off-roader damage.

The lot acquired, the adjacent Public and Nature Trust lands have all been damaged for many years by cattle and off-roader use. The Nature Trust lands have been open to this damage for more than 40 years except for the nearly 7 acres fenced by volunteers in 2015. See links to the fencing story and the benefits:

https://www.boundaryalliance.org/gilpin_saga_2017and2018.pdf

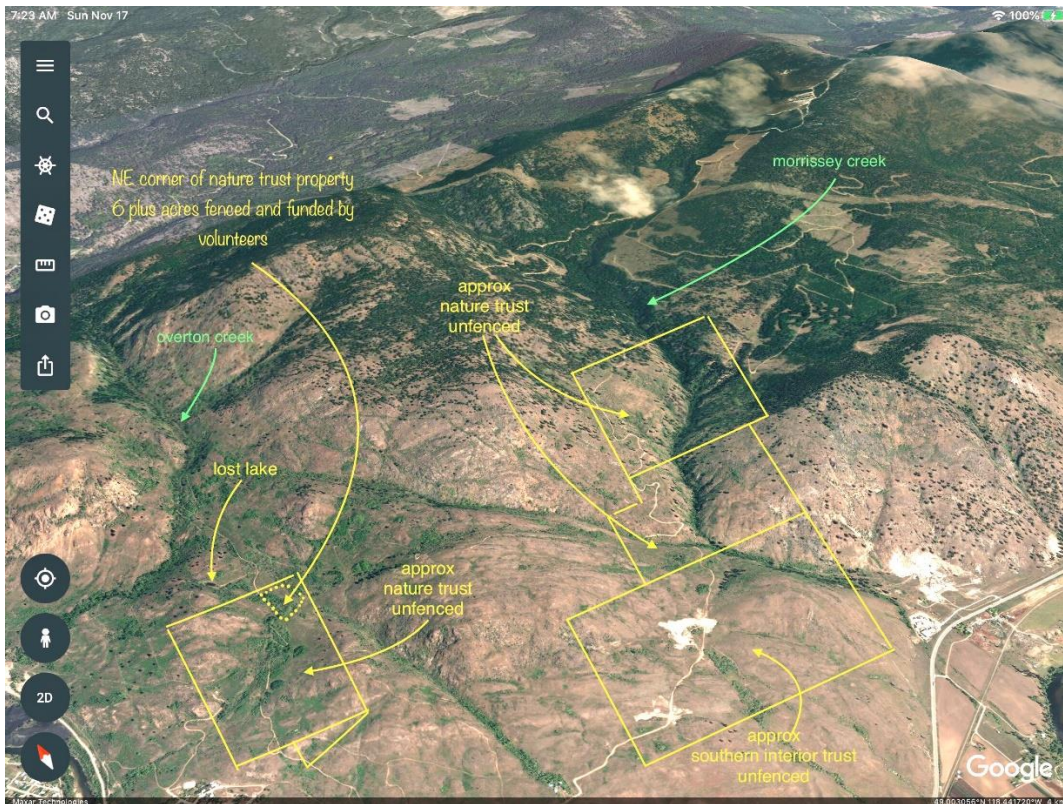
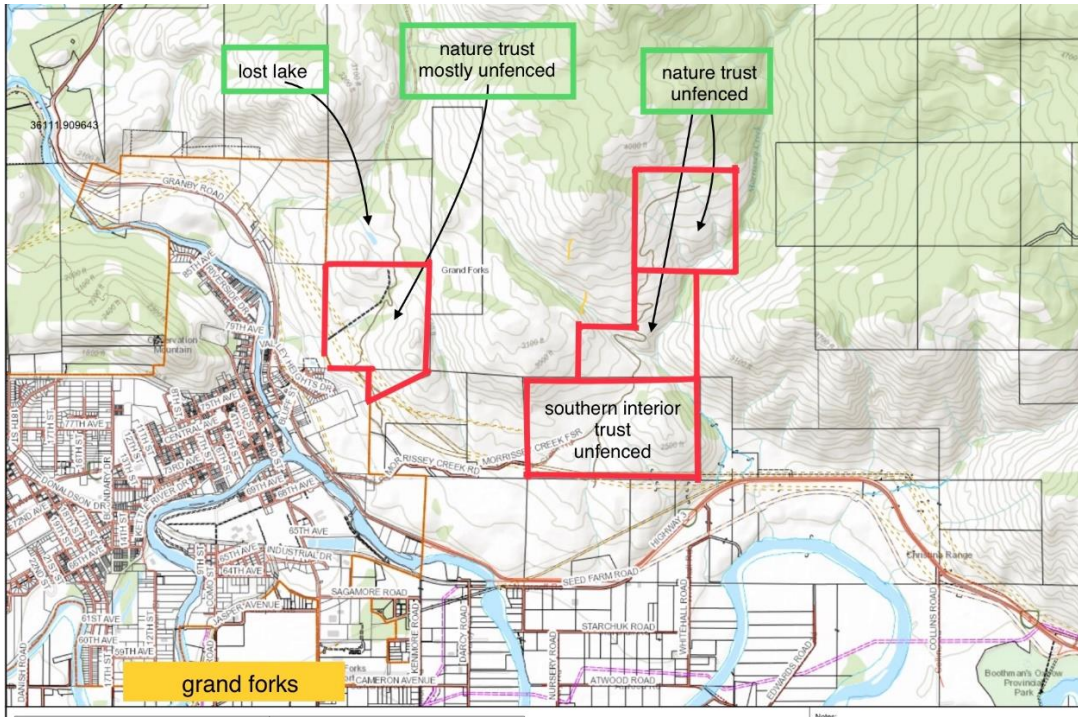
SOUTHER INTERIOR LAND TRUST PURCHASE

See the purchase story on the SILT website. They would appreciate any donations or support for this or other purchases. <https://siltrust.ca/dl-492-to-be-conserved-forever/>

Boundary Alliance Video on youtube: 5 minutes. Up to 1920 x 1080 quality if your download speed and devices allow.....



The following maps show the SILT purchase, the Nature Trust lands and the surrounding Crown (Public Land)



Our fencing projects on the Gilpin were intended to **show what could be** in the Gilpin in the absence of cows and off-roaders. While our example of working and effective wildlife fencing has been ignored by the Ministry of Forests and Range, the benefits of exclusion are more startlingly obvious every year. Although Nature Trust has controlled several properties for more than 40 years, it was not until we proposed and completed fencing the nearly 7 acres near Lost Lake, that any part of the Nature Trust lands were protected from cows and off-roaders. Perhaps inspired by our example (perhaps embarrassed) NT has since installed some barriers in that area to somewhat deter off-roaders.

BETTER OPTIONS JUST REQUIRE THE WILL PLUS

A MINISTRY OF FORESTS AND RANGE THAT PRIORITIZES THE PUBLIC INTEREST

Instead of catering to extractive, damaging so called stakeholders.

Links for Our Earlier Articles and Videos on the Gilpin:

GILPIN GRASSLANDS SAGA 2017 2018

https://www.boundaryalliance.org/gilpin_saga2016.pdf

LOST LAKE REVISITED Jan 2016

<http://www.boundaryalliance.org/lostlakerevisited.pdf>

NATURE TRUST FENCING REVISITED Dec 2015 plus video

http://www.boundaryalliance.org/naturetrust_fencingvid.pdf

NATURE TRUST Spring Protected after 42 years

<http://www.boundaryalliance.org/naturetrust.pdf>

LOST LAKE, GILPIN GRASSLANDS & a RANDOM ACT of PUBLIC GOOD

<http://www.boundaryalliance.org/lostlake.pdf>

RETURN TO BOUNDARY ALLIANCE MAIN PAGE [here](#)